



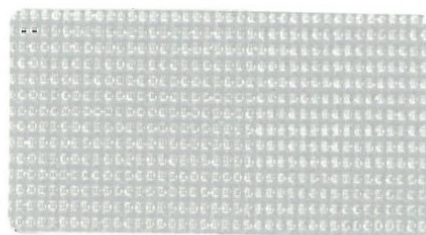
Bronze

↕ ↗ 86-2043



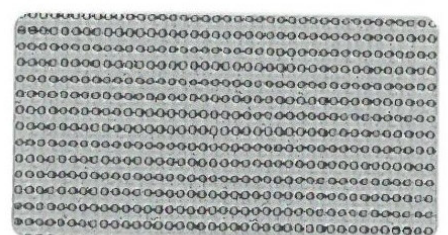
Weiß

↕ ↗ 86-2044



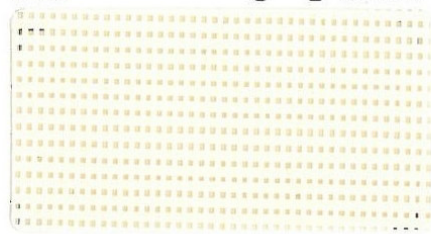
Alu/Weiß

↕ ↗ 86-2051



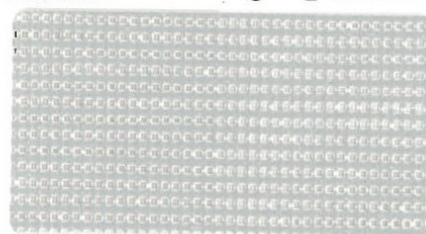
Metall gehämmert

↕ ↗ 86-2045



Champagner

↕ ↗ 86-2175



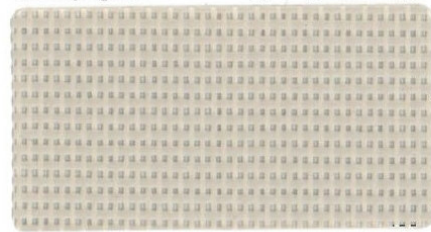
Alu/Seidenfarben

↕ ↗ 86-2046



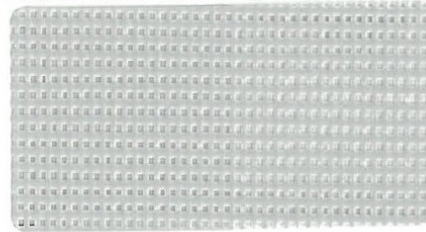
Beton

↕ ↗ 86-2167



Sandbeige

↕ ↗ 86-2135



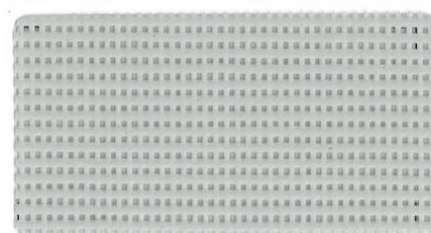
Alu/Alu

↕ ↗ 86-2048



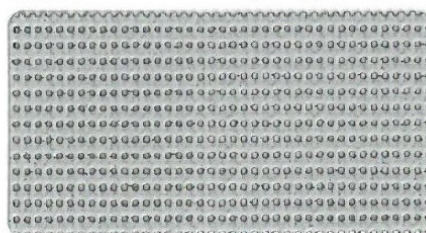
Anthrazit

↕ ↗ 86-2047



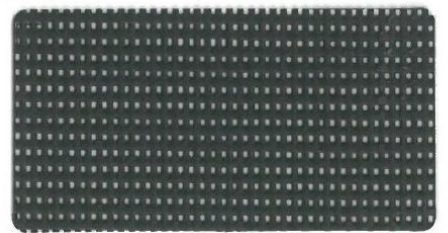
Kieselstein

↕ ↗ 86-2171



Alu/Anthrazit

↕ 86-2068

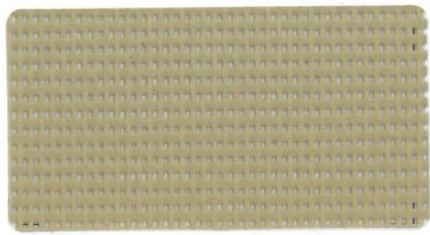


Schwarz

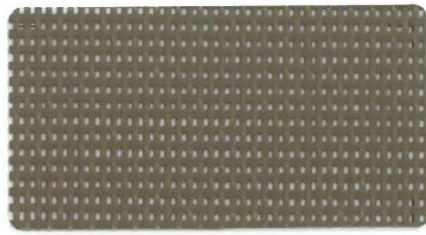
↕ ↗ 86-2053

↕ erhältlich in Breite 177 cm

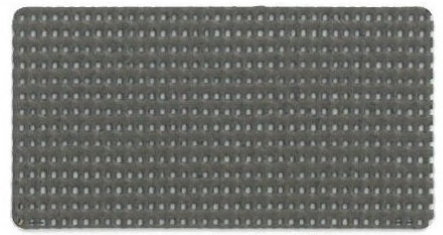
↗ erhältlich in Breite 267 cm



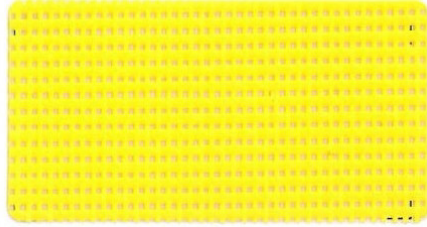
Pfeffer  $\overleftrightarrow{S}$   $\overleftrightarrow{L}$  86-2012



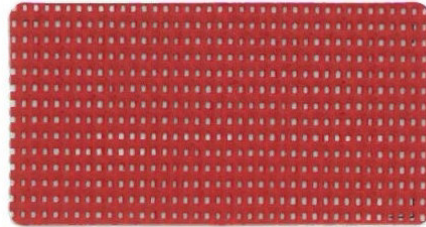
Kakao  $\overleftrightarrow{S}$  86-2148



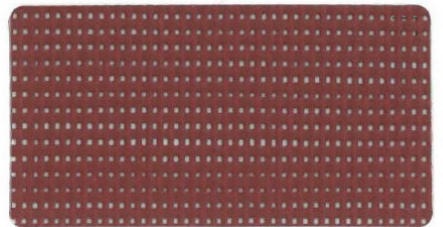
Bronze  $\overleftrightarrow{S}$   $\overleftrightarrow{L}$  86-2043



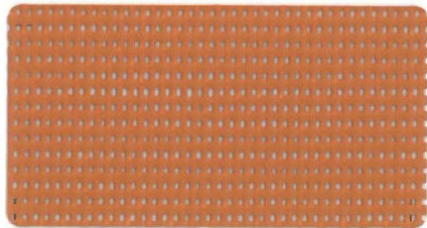
Butterblumengelb  $\overleftrightarrow{S}$  86-2166



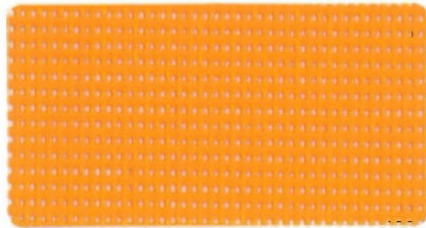
Rot  $\overleftrightarrow{S}$  86-8255



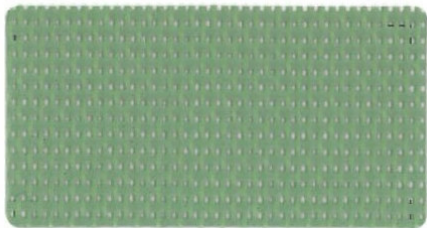
Muskatnuss  $\overleftrightarrow{S}$  86-50260



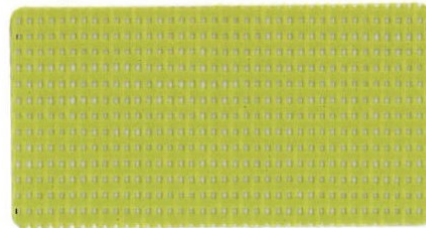
Karamel  $\overleftrightarrow{S}$  86-50261



Orange  $\overleftrightarrow{S}$  86-8204



Moosgrün  $\overleftrightarrow{S}$  86-2158



Bambus  $\overleftrightarrow{S}$  86-50333



Mitternachtsblau  $\overleftrightarrow{S}$  86-2161

## Sonnenschutz- und Lichteigenschaften (nach EN 14501)

Références	Breite(cm) 177 267	TS	RS	AS	TV n-h	TV n-n	$g_{tot}^e$	$g_{tot}^i$	Coordonnées NCS
86-2012	• •	18	27	55	17	16	0.15	0.48	S 4010 Y 30 R
86-2043	• •	12	10	78	11	13	0.12	0.53	-
86-2044	• •	32	59	9	30	14	0.21	0.38	S 0500 N
86-2045	• •	14	29	57	14	13	0.12	0.47	-
86-2046 A	• •	21	43	36	20	14	0.16	0.43	-
86-2046 B	• •	19	58	23	19	14	0.14	0.38	-
86-2047	• •	16	7	77	16	15	0.14	0.54	-
86-2048	• •	22	42	36	22	16	0.17	0.43	-
86-2051 A	• •	20	40	40	20	15	0.15	0.44	-
86-2051 B	• •	20	60	20	20	15	0.14	0.37	-
86-2053	• •	15	5	80	15	13	0.14	0.54	S 8500 N
86-2068 A	• •	16	35	49	15	15	0.13	0.45	-
86-2068 B	• •	16	7	77	15	15	0.14	0.54	-
86-2135	• •	20	41	39	20	16	0.15	0.43	S 2005 Y 50 R
86-2148	• •	14	13	73	14	13	0.13	0.52	S 7010 Y 30 R
86-2158	• •	15	25	60	14	12	0.13	0.48	S 4020 G 30 Y
86-2161	• •	16	17	67	14	14	0.14	0.51	S 5040 R 80 B
86-2166	• •	30	45	25	26	15	0.21	0.42	S 0570 Y 10 R
86-2167	• •	15	17	68	14	13	0.13	0.51	S 6005 R 80 B
86-2171	• •	19	39	42	17	14	0.15	0.44	S 2502 B
86-2175	• •	28	57	15	26	14	0.19	0.39	S 0505 Y 20 R
86-8204	• •	27	41	32	19	14	0.19	0.44	S 0585 Y 40 R
86-8255	• •	23	24	53	17	16	0.18	0.49	S 1580 Y 90 R
86-50260	• •	15	13	72	14	13	0.14	0.52	S 5040 R
86-50261	• •	21	35	44	15	14	0.16	0.45	S 3050 Y 60 R
86-50333	• •	22	32	46	19	15	0.17	0.46	S 2070 G 70 Y

**A:** Die der Sonne zugewandte Aluminiumseite  
**B:** Die der Sonne zugewandte farbige Seite

**TS:** Strahlungstransmission in %  
**RS:** Strahlungsreflektion in %  
**AS:** Strahlungsabsorption in %  
**TS + RS + AS = 100 %** der einfallenden Energie  
 **$g_{tot}^e$ :** Sonnenschutzfaktor außen  
 **$g_{tot}^i$ :** Sonnenschutzfaktor innen  
Verglasung Typ "C": doppelte Isolierverglasung, schwach wärmeleitend auf der Isolierinnenseite der zum Raum gewandten Glasscheibe (4 + 16 + 4; Argon-Füllung - g = 0.59 - U = 1.2).

**TVn-h:** Transmission von sichtbarem Licht normal-hemisphärisch in %  
**TVn-n:** Transmission von sichtbarem Licht normal-normal in %